

Ensure your competitive advantage

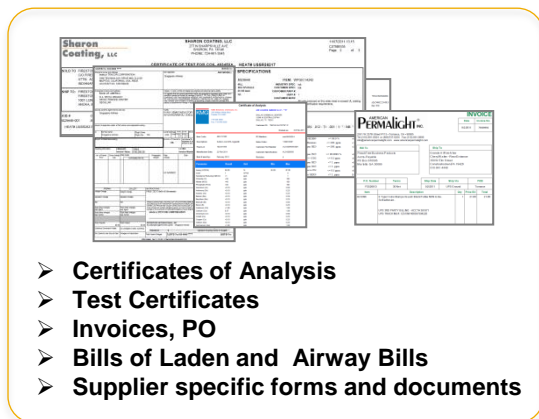
The sword of competition is hanging over all of us. Every business is trying to maximize the performance of their operations utilizing whichever means they can find. We strongly believe that in order to be successful in this perpetual struggle your strategy should be based on replacing manual labor with fully automated operations. This is where SiMX can help. We increase the cost effectiveness of data processing **five** times by switching to fully automated COA parsing, data extraction, validation and reporting. This solution is implemented and optimized for the workflows of chemical manufacturers.

Suppliers



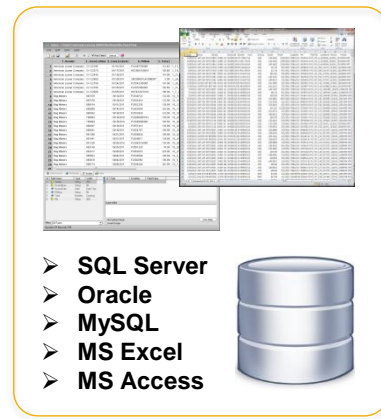
- PDF
- HTML
- Excel
- DOC
- Emails
- Web

COA and other documents



- Parsing
- Extraction
- Cleansing
- Reconciliation
- Verification
- Reporting

Structured data storage



- SQL Server
- Oracle
- MySQL
- MS Excel
- MS Access

- Pay for results, not efforts
- Get a practical solution for your business needs or your money back, guaranteed!
- Do not wait - streamline your data processing, add a competitive edge, save money and time

Call or email us now, start cutting your cost today!



How can this benefit you?

- Free your personnel from the dreary task of manual data entry
- Get the upper hand over the competitors who still do the job manually
- Save hours of work every day, auto processing is incomparably faster than manual operations
- Bring your data processing quality to a new level. Automated workflows will greatly improve the efficiency and reliability of your operations. Take the human factor out of the equation with all the mistakes and complains that come with it
- Realize new opportunities by implementing business requirements seemed impossible previously
- Automated data consolidation and verification, quality assurance, exception reports guarantees the compliance with the industry highest standards
- Our top of the line customer support ensures that you will never be left alone with the data processing problems. We respond in under two hours, guaranteed

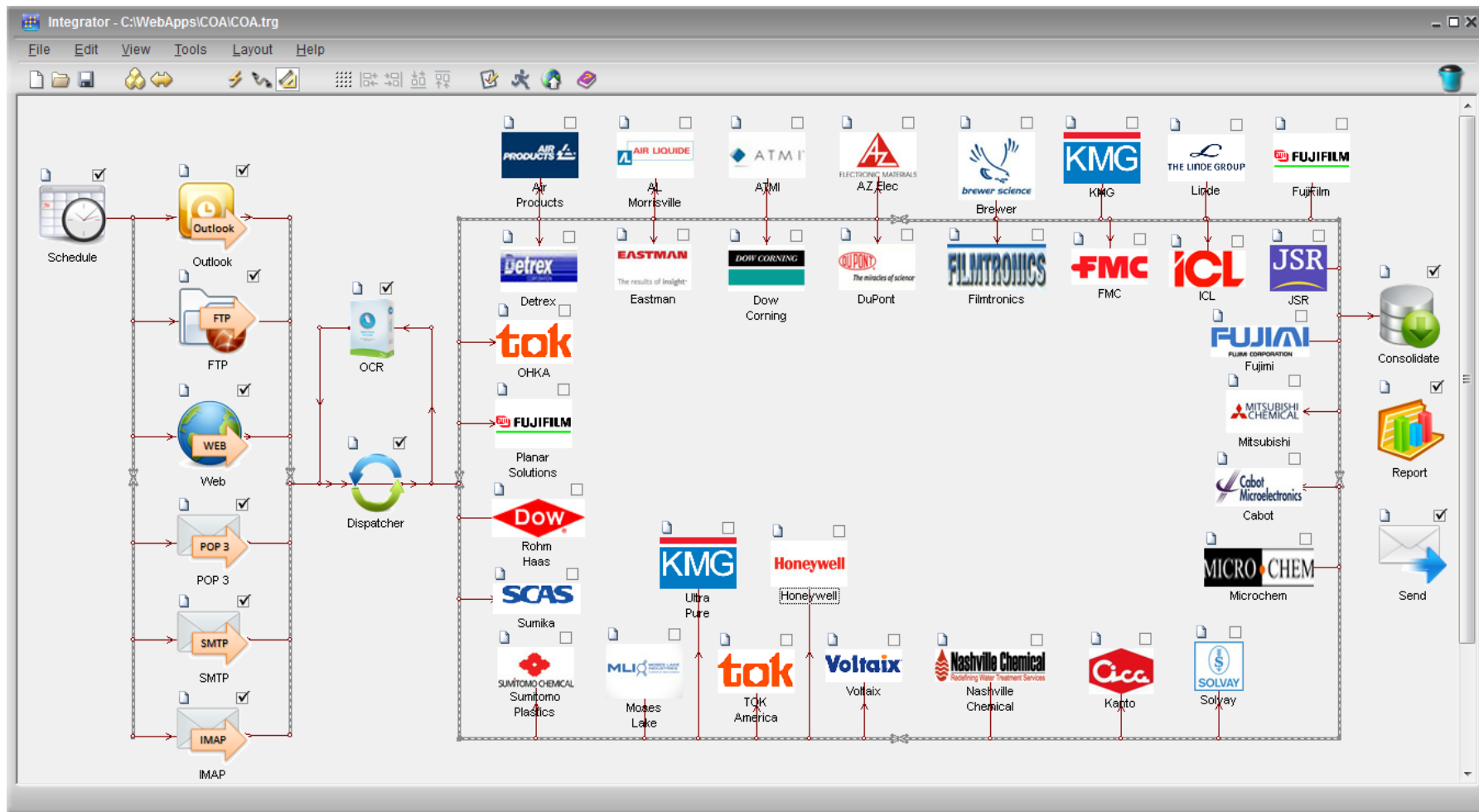
Abraham Lincoln said:

"Give me 6 hours to chop down a tree, and I'll spend the first 4 sharpening the axe."

Our axe is already razor sharp. Let us clean up the backlog of COA, Test Certificates and any other documents waiting to be processed

The COA processing solution is waiting for you

The solution accepts COA documents from any media (FTP, Web, Email) in any formats (PDF, HTML, Word, Excel, text). COA layouts from dozens of chemical manufacturers are implemented already. In case you are dealing with suppliers which are not covered yet, we will customize the solution for you next day after we receive the specification.



Cutting Edge technology

- Retrieving data from anywhere - emails, websites, HTTP and programming interfaces
- Extracting loosely structured data from any file formats - PDF, Word, Excel, HTML, TXT, etc.
 - Visual setup for single and multi-line templates, tag based and multi-line fields
 - Multiple templates and multiple input dictionaries to support hierarchical (multi-level) data extraction
 - Visual feedback, dynamic highlighting of the data to be extracted – what you see is what you get
 - Export of all input lines skipped by the extraction process will help to make sure that nothing was missed inadvertently
 - Auto parsing of composite input values like street addresses and names
 - Input and output filtering using lookup tables, regular expressions or scripting
 - Calculated fields support
 - TextConverter 4 integration with TARGET Reports facilitates further data analysis and presentation
- Loading the extracted data into any database – SQL Server, Oracle, DB2, Access, Excel, etc.
- Reconciling incoming data with the data in the system
- Data analysis, reporting, PDF refactoring
 - Auto-formatting
 - Iterative forms
 - Nested reports
 - Export to any database format
 - Grouping by ranges (scales)
 - Recursive calculated fields
 - SQL and VB Script calculations
 - Top N and Bottom N reporting at any grouping level
 - Aggregate fields for ratio calculations
 - Multiple data sources per report document
 - Cross-database joins (Oracle to Excel i.e.)
 - Summary, detailed, and summary with details reports
 - Table, crosstab, and graph layouts
 - More than 15 different charts with support for two levels grouping
 - Output formats: PDF, Excel, RTF, HTML, XML/XSL
- Automated exceptions handling and notifications
- Web portals for data access, interactive querying and reporting

The next slides illustrate a multi-step automation process

Why SiMX?

- We are a software development company based in Princeton, New Jersey. We have more than 20 years of experience in building software components, data processing automation and custom application development.
- Our clients range from small businesses to Fortune 500 companies. The level of satisfaction with SiMX solutions and services is 100%, please see the next pages with our client's testimonials
- We build data processing solutions using software components developed by SiMX. Thus we can quickly customize our tools or create new ones for the specific needs of our clients
- Knowing well that no one is insured from mistakes, all our solutions incorporate rigorous data integrity control, automatically issuing exception reports detailing problems and their causes
- All our clients can attest SiMX main principal – you pay for results not efforts
- And in addition to all that - you do not pay until you are convinced that the solution will work for you (the sample is free)
- The company and all the development is 100% US based, all the employees are US citizens, this eliminates most of the security concerns

SiMX is a trusted partner



Neil Myers
President
Connect Marketing

We have been a customer of SiMX for many years. We use both their TextConverter product as well as their services to build custom applications. For example, we use their solutions to find online press coverage of our clients on a daily basis. Using SiMX saves us time, money and makes the process much more accurate than our old manual methods. Our analysis has shown their solutions paid for themselves within the initial 90 days of use.

As a vendor, SiMX is very responsive and has a high degree of integrity. We consider them an important partner.



Brian Bigger
Director, Application Development
and Business Intelligence
Greenspoon Marder

SIMX solutions met the standards to streamline the data transformation process that takes place when importing disparate file formats into various firms' applications. The TARGET suite development tools is totally integrated with the .NET framework, and we are currently using an in-house SIMX application with another ASP.NET Web application for the escrow department; we are very satisfied as a client with the technical support and their prompt responses to problem resolutions, and their guidance in the data conversion process. Their technical staff goes above and beyond to exceed client's expectations; we strongly recommend SIMX Software Solutions to be your Data Extraction and Processing platform.

SiMX is a trusted partner



Leigh Offord
(Yakima), PMP®
CACI, Programmer
Analyst Lead

At CACI we support government and military customers in their day-to-day business processes. We had a customer that received data via an excel form and needed that data to be read into a database and then manipulated. We needed a tool that was affordable, high quality and easy to set up. We found SIMX and have been very happy with the results. SIMX services assisted us in setting up the tool and ensuring the programs we wrote worked and solved our business needs. They are very responsive and always provide us solutions quickly ensuring very little downtime for our customers which is extremely important to us. The benefits using this tool have provided our clients are very great. Our customers used to have to manually enter data from this excel form weekly which could have up to 1000 rows. Manual data entry not only takes a great amount of time, but it also is very prone to user errors. Now the client just has to forward the spreadsheet they receive via email and the data is parsed via SIMX and loaded into their database so they can use it instantly.

Since the initial set up, we have found numerous other ways to utilize this tool to improve business processes for our clients and look forward to our continued use and continued satisfaction.



Michael G. Montgomery
Division Reporting Analyst
HCA Central & West Texas Division, IT&S

TextConverter is the most powerful application I have ever seen for extracting data from PC documents. Any data that is possible to extract can be captured by TextConverter because of its powerful logic and ultimate flexibility for this purpose. The new user interface makes it possible for anyone to take advantage of the power of this application. SiMX personnel are always very friendly and eager to help me whenever I call upon them to resolve issues in using their applications, and their resolutions have always exceeded my expectations.

SiMX is a trusted partner



Drew Zabrocki
Managing Director
Centricity, LLC

1250 N Wenatchee
Avenue, Ste. H250
Wenatchee, WA 98801
888 778.9994

service@centricity.us
www.centricity.us

Over the past decade I've owned and operated telecom and cable TV service providers, systems integration firms and built multiple professional service teams. I have hired dozens of professional services organizations and done business with some of the world's largest engineering entities. Of the relationships created, I view the one that we've established with SiMX as one of the most valuable and genuine.

I offer my most sincere recommendation of SiMX based not only on the impressive technical feats that I have witnessed, but rooted by the honesty, sincerity and exceptional business acumen exhibited by the SiMX development and support teams.

My first experience with SiMX was early in 2012 when pressed against a deadline and feverishly hunting for a solution. We hired and fired two other firms who were unable to deliver and was about to abandon a complex data mining project that would forever change the landscape of an industry. We had tens of thousands of pages of information, each contained data of various sorts and formats but what we needed was uniformity and a relational database. After months of hamming and spending thousands of dollars in professional services and consulting contracts with other firms, no one else was able to deliver.

Unwilling to give up, we searched for a firm who could overcome the issues, address the known obstacles and deliver a solution. We contacted a dozen organizations that day, then, we found SiMX.

I had a return call from a SiMX Solutions Expert in minutes; the next day a lead developer vetted their ability to accomplish the project as I watched in real-time. SiMX's customer service is top drawer. Our first project with SiMX was completed on time, on budget and with impeccable accuracy. We needed a few more passes on the data structure to fit our system and they obliged with dispatch. Where every other partner was over-budget and incapable SiMX simply and expertly delivered.

We were notably impressed with SiMX's professionalism, responsiveness and detail so we presented a data acquisition and reporting project of mammoth proportions.

SiMX is a trusted partner

The team approached the opportunity with clarity and a level of engagement you don't typically find with contractors. They embraced the strategic, philosophical and technical aspects with a high degree of sophistication and skill. It's been a year since we commenced on the project; it's evolved tremendously in form and function due to the excellent working relationships and friendships established over time.

We fully trust SiMX to deliver on time, as promised and without excuses. Their practical and direct approach streamlines our costs and our solutions. Their results continue to exceed our expectations.

We have concurrently scoped and delivered other projects as well; one in particular speaks volumes to the character of the team at SiMX: It was the Friday before Christmas; with only days until the New Year a client approached me with an emergency. They needed years of medical records, charts and customer data extracted and imported into a new system but they could only produce PDF reports from the old system. Their data was locked in a system about to be decommissioned and all the while their operation must remain in service 24/7.

We did not have the time to fully scope and estimate this project; the business deal between SiMX and our company was negotiated on trust. SiMX director Andrei Afanassenkov simply stated: "you pay not for effort, only for results". He then approached the challenge calmly and professionally; within days all data was extracted, reassembled into multiple iterations of new databases and a User Interface was created to fully support the transition for staff. With the combination of our company and SiMX the entire project was "turn- key" and the client was delighted. Once again SiMX made us look very good.

We work with SiMX on a regular basis, often communicating daily on a number of items and projects. Their level of service and responsiveness has been consistently excellent.

I strongly encourage you to consider the SiMX team for your complex data acquisition, reporting, software and/or application development needs.

Drew Zabrocki
Managing Director
Centricity, LLC



SiMX is a trusted partner

My company "Quality Letters of Credit" receives hundreds of PDF documents every month - letters of credit, air way bills, ocean bills of lading, etc. I used to have several employees rambling through incoming emails, opening attachments, finding/creating the corresponding records in the database and retyping the information. All those inconveniences are gone now. SiMX 4R solution automatically searches emails, extracts data from attachments, determines the type of data, and updates the database - no manual intervention is required. My employees freed from the dreary task can now fully focus on the business processes and customer satisfaction. SiMX is my trusted IT partner and I have no hesitation in recommending it to anyone.



David W Clements
President
Quality Letters of Credit, Inc.

The combination of a strong collection business and a weak economy meant that we were receiving hundreds of bankruptcy notices, dismissal, and discharges from judicial regions in all 50 states every day. Five full time employees were involved in keying in the bankruptcy information. Looking for a better solution we called six different vendors that offered these types of automation solutions. After seeing the bankruptcy forms, all six turned us down. SiMX was the only vendor that offered a credible solution. The SiMX automated process reliably extracts clean structured data from exceptionally diverse and inconsistent layouts and formats. I am very impressed with the services and the technical ability of SiMX team.



Stephen Florczak
Executive Vice President of IT
Capital Management Services, L.P.

Clients reviews

For more than seven years Smyyth's business processes have relied on the SiMX 4R technology backbone for data retrieval, extraction, consolidation, and reporting. The fully automated procedures collect data from third party sources including carrier APIs, web pages, emails, and flat files. The extracted data is cleaned, transformed and the system matches against existing data, adds missing information, and updates records. Reports are customizable and delivered automatically over our web portals or by email. It's a great product, and only matched by the quality of SiMX's support.



Kristen Metzger
President
Smyyth

Our IT platform utilizes the SiMX 4R solution for the automation of daily data processing and reporting. The customized system gathers data from various sources (flat files, web pages, real time feeds, etc.) and consolidates the information for reporting. It creates executive, performance, and analytical reports which are delivered to subscribers over the web or via emails. The platform is fully automated and executes with great precision.

SiMX has provided us with data processing automation services for more than five years. The SiMX support team has always demonstrated exceptional professionalism and responsiveness.



Alexander Shushkovsky
Director of Applications Development
Rodman & Renshaw, LLC

In SiMX they trust

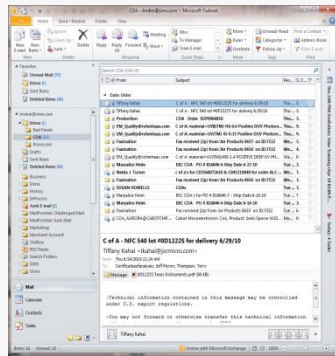


How it works Step 1 - Data Retrieval

Your office receives various Certificates, PO, Invoices and other documents from suppliers and customers in countless shapes and forms, through multiple channels. SiMX solution allows accessing any kind of data transmitting media, local and remote data storages.

Get data from:

Emails



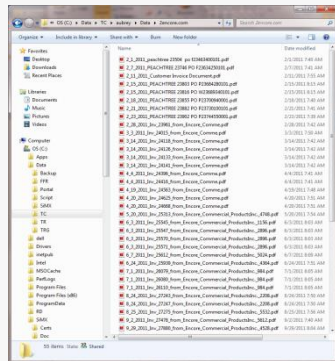
Most of our clients receive information from their suppliers by emails. Our components can get email attachments from arbitrary email systems. If you are receiving COAs, POs or any other kind of documents via-emails our data access module will deliver the data for processing automatically. The extended set of data accessors can connect to Outlook, Exchange, POP3, IMAP, and any other client specific email protocols

Internet

A screenshot of a web browser displaying a table of data. The table has multiple columns, including 'ID', 'Name', 'Address', 'City', 'State', 'Zip', 'Phone', 'Fax', 'Email', and 'Web'. The data appears to be a list of companies or organizations. The table is titled '100 items found, displaying all items'.

A lot of valuable data is still inaccessible in any other way but through the web browsers. SiMX retrievers can go out to the web according to the specified path, get through entry checks, navigate to the destination pages, apply dynamic queries and download web content and files. Being setup once, the process is fully automatic

File System



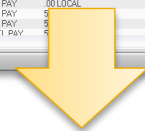
If you already have your documents in the file folders, SiMX File Watcher will trigger automated file processing when new files arrive or according to a scheduler. File transferring is supported through FTP, SFTP, and File uploads

Web APIs



When suppliers offer modern ways of accessing their documents, SiMX components utilize web based APIs to retrieve the data. We support SOAP and HTTP requests. In addition SiMX adopts client specific proprietary protocols

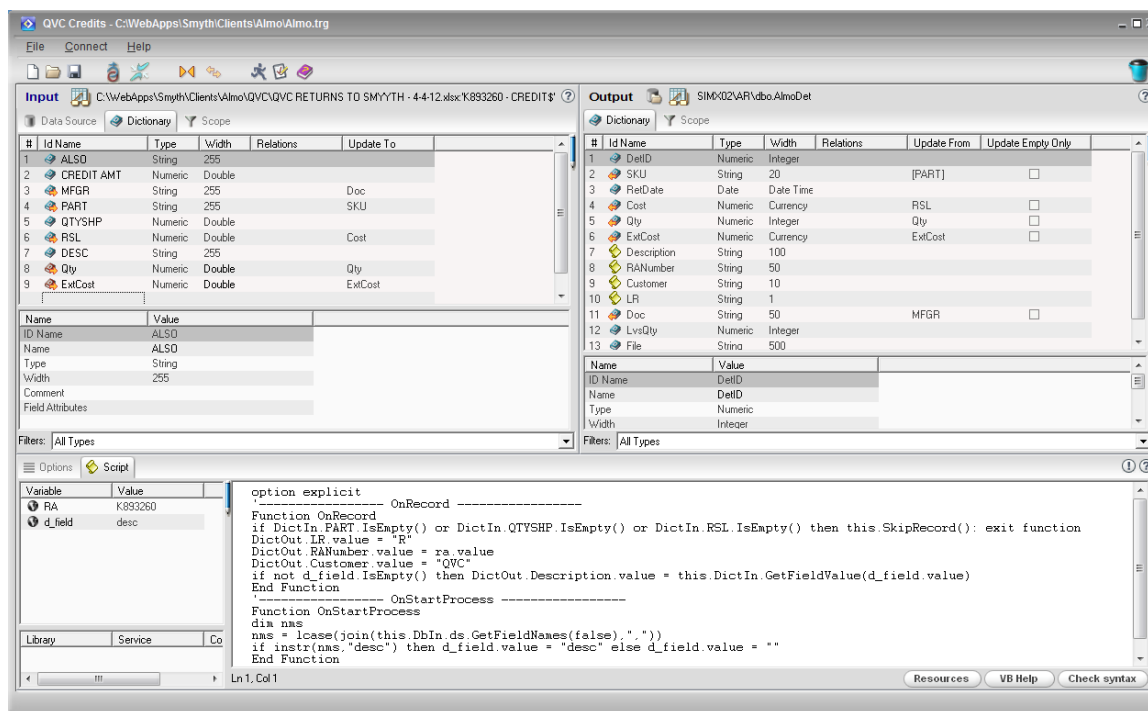
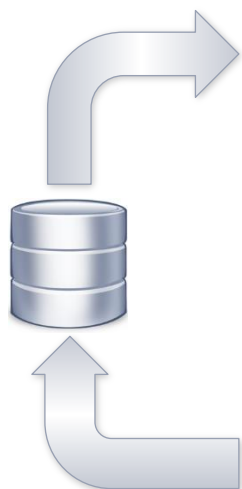
A state-of-the-art data extraction component - SiMX TextConverter enables building data parsing and extraction projects in a matter of hours regardless of the input documents complexity. Our tools extract data from PDF, HTML, DOC, Excel, TXT, CSV file formats and any types of documents.



employee_id	ssn	proj_start_date	week_end_date	period_num	cntrb	contractor	org_hr_rate	ct_daily	ct_hrs_dues	ct_hrs_dues2	ct_hrs_dues3	ct_hrs_dues4	ct_hrs_dues5	ct_hrs_dues6
1	NALL	595-094.0704	2010-02-10 00:00:00	NULL	1400	ASPHALT LABORER-RAKER	NALL	18.40	0.00	9.50	0.00	0.00	8.00	5.00
2	NALL	595-0950.74	2010-02-10 00:00:00	NULL	2000	LABORER-PIPELAYER	NALL	18.40	0.00	0.00	0.00	0.00	0.00	0.00
3	NALL	524-654.0556	2010-02-10 00:00:00	NULL	2000	CLAMP TRUCK UNDER 4CY/WATER TK	NALL	18.00	0.00	0.00	0.00	0.00	0.00	0.00
4	NALL	595-864.0101	2010-02-10 00:00:00	NULL	OFF	OFFSITE NO CERTIFIED PA	NALL	17.00	0.00	0.00	0.00	7.50	9.00	4.50
5	NALL	382-565.5006	2010-02-10 00:00:00	NULL	2000	LABORER - TRAFFIC DIR FLAGGER	NALL	13.25	0.00	0.00	9.00	9.00	8.00	0.00
6	NALL	543-767.7101	2010-02-10 00:00:00	NULL	OFF	OFFSITE NO CERTIFIED PA	NALL	15.00	0.00	0.00	0.00	4.50	5.00	5.00
7	NALL	592-430.3202	2010-02-10 00:00:00	NULL	1400	ASPHALT LABORER-RAKER	NALL	16.25	0.00	0.00	0.00	0.00	8.00	0.00
8	NALL	453-543.4489	2010-02-10 00:00:00	NULL	1400	ASBESTOS REMOVAL	NALL	18.45	0.00	0.00	0.00	9.00	9.00	0.00
9	NALL	523-839.6036	2010-02-10 00:00:00	NULL	OFF	OFFSITE NO CERTIFIED PA	NALL	32.4019	0.00	0.00	0.00	0.00	0.00	8.00
10	NALL	543-110.0075	2010-02-10 00:00:00	NULL	OFF	OFFSITE NO CERTIFIED PA	NALL	12.00	0.00	0.00	0.00	0.00	0.00	0.00
11	NALL	524-214.0664	2010-02-10 00:00:00	NULL	1400	ASBESTOS REMOVAL	NALL	18.45	0.00	0.00	9.50	10.00	10.00	0.00
12	NALL	624-149.0666	2010-02-10 00:00:00	NULL	OFF	OFFSITE NO CERTIFIED PA	NALL	21.10	0.00	0.00	8.00	0.00	0.00	0.00
13	NALL	524-144.0462	2010-02-10 00:00:00	NULL	2000	CLAMP TRUCK UNDER 4CY/WATER TK	NALL	18.00	0.00	0.00	0.00	0.00	7.00	0.00
14	NALL	522-044.0658	2010-02-10 00:00:00	NULL	2000	LABORER - TRAFFIC DIR FLAGGER	NALL	17.35	0.00	0.00	9.00	8.00	9.50	0.00
15	NALL	500-320.9033	2010-02-10 00:00:00	NULL	1320	OPERATOR - TRACKHOE	NALL	22.82	0.00	3.50	0.00	0.00	6.00	0.00
16	NALL	502-029.0039	2010-02-10 00:00:00	NULL	1400	ASPHALT LABORER-RAKER	NALL	19.20	0.00	6.00	0.00	0.00	0.00	0.00
17	NALL	521-254.9791	2010-02-10 00:00:00	NULL	1320	OPERATOR - 6 CY WHEELS & UNDER	NALL	22.82	0.00	0.00	0.00	0.00	0.00	0.00
18	NALL	521-255.0671	2010-02-10 00:00:00	NULL	1320	OPERATOR - TRACKHOE	NALL	22.82	0.00	0.00	0.00	0.00	0.00	2.00

How it works Step 3- Data Reconciliation

The newly extracted data always needs additional massaging. Database lookups to find existing references, suppressing duplicates, building cross references, consolidating new and existing records – all that is accomplished by SiMX database transformers. They are visual components which do not require understanding of programming languages or database technologies, thus allowing much faster implementation than traditional tools



- Summarizing
- Removing Duplicates
- Records matching
- Adding missing, updating existing, reporting dropped records

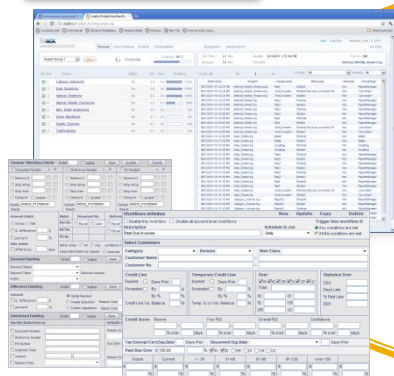
How it works Step 4- Web Access

All automated workflows can be controlled, viewed and edited over the web, allowing your management, analysts and customers access to processes and processing results from anywhere at any time.

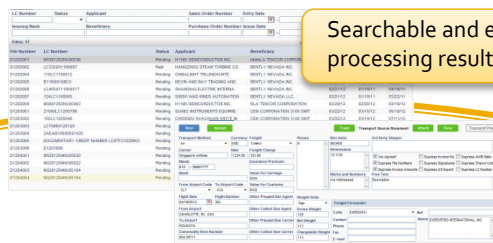
- ✓ Search, analyze, and edit the processed data
- ✓ Create reports and forms personalized for your customers and present them online
- ✓ Have separate portals for executives, analysts and clients
- ✓ Increase the efficiency of quality control, information observability, results delivery



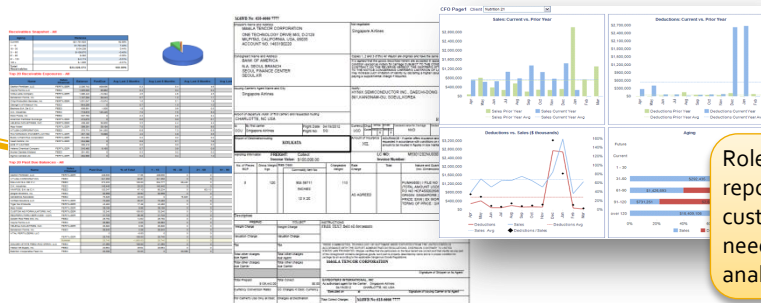
Process control UI



Searchable and editable processing results



Prebuilt user interfaces provide the most convenient way to control processes, search the data, synchronize the extracted results and original sources, modify the data and deliver online interactive reports



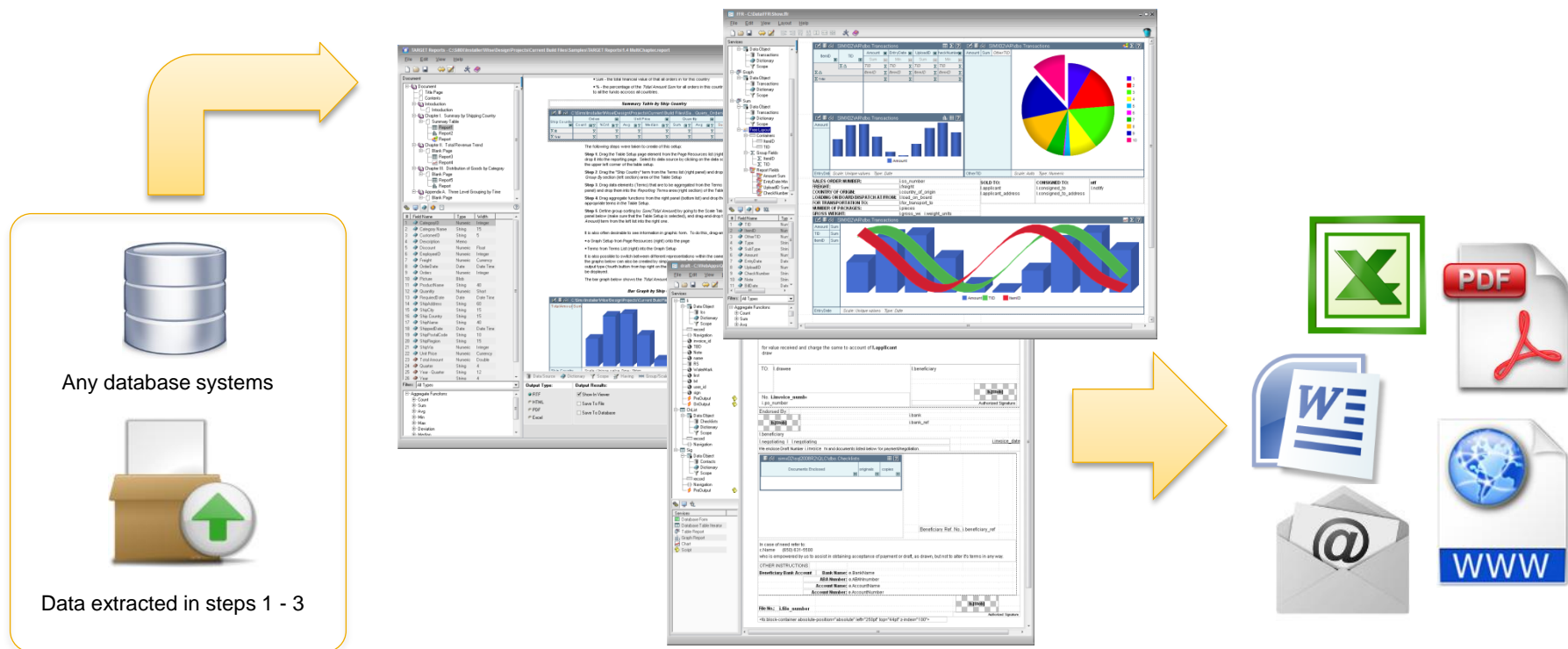
Original documents can be viewed for each extracted piece of data facilitating quality control and editing

Role based interactive reports and output forms customized for specific needs of executives, analysts, and customers

The scope of web functionality is limitless, from quality assurance to process control, to interactive web reporting and client specific features. SiMX application development suite provides the unique ability to build web applications and user interfaces without programming or web development skills.

How it works Step 5- Reporting

Output reports and forms customized for your requirements and needs of your clients, performance and executive reports, reports refactoring – all that is easily achievable with SiMX Target Reports and Free Form Reports components. Intuitive user interface, canned templates, unmatched layout flexibility and reporting variety facilitate design of complex output forms and reports in a matter of hours, precisely to the client's specifications.



Summary, details, crosstabs, free layout, iterative forms, more than a dozen of charts and graphs, auto formatting, grouping by ranges and more

Product delivery

- We customize the solution for you according to your specifications using our state of the art data processing and reporting software components
- We can install the solution on your premises or we can run it on our servers, providing comprehensive technical support and monitoring for the lifetime of the solution
- We are willing to help you with all additional data extraction, manipulation, access, and presentation tasks as they arise. Alternatively we can train your personnel to continue the development and provide the support for the solution on their own

Sample solutions



Air Liquide

The international industrial gas company

Certificates of Analysis

The automated solution performs the following daily tasks:

1. Monitoring arriving emails
2. Extracting attachments
3. Categorizing input files by COA providers. There are more than twenty five data extractors for different providers
4. Extracting data and validating chemical parameters against Limits lookup table (Oracle)
5. Rejecting samples if not validated or loading them into Oracle based data warehouse
6. Each rejection is accompanied by automatically created and emailed exception report
7. Daily performance reports provide all statistics regarding the process



LCP Tracker

Labor Compliance Industry

Payroll Processing System

Automated processing system extracts data from payroll reports produced by numerous accounting companies in different formats and submits the extracted and structured data to the labor department of the federal government.



Capital Management Services L.P.

The nationally licensed and recognized collections agency

Bankruptcy and Discharge forms processing

1. Watching file folders for arriving files
2. Running input PDF files through Optical Character Recognition component converting image based data to the textual representation
3. Extracting Bankruptcy and Discharge information from various data layout from all fifty states
4. Archiving input files
5. Sending extracted data to AS 400 system for further processing
6. Emailing performance reports



Connect Marketing

Technology Public Relations

An automated system for extracting loosely structured data from the wide array of websites with complex navigation and dynamic querying. API based access to various internet sources using multiple protocols and formats (SOAP/HTTP, XML/JSON) The regularly extracted data is consolidated with the existing information in the data warehouse

Sample solutions



Smyyth

*Leader in Credit, Collection,
Deduction, Accounts Receivable,
Order-to-Cash Services and Systems*

Accounts Receivable processing

1. Client data extraction - customer, line item, and line item details (SKU) levels
2. Customer and item level consolidation
3. SKU level reconciliation, debit/credit matching
4. Automated Cash Application, remittance advice matching, discount processing
5. Client and performance reports, dashboards



Rodman & Renshaw

Trading company

Trades Cost Analysis

1. Extracting and loading ECN trade data from multiple services – ARCA, BATS, NASDAQ, etc.
2. Consolidating ECN trade records with order management system data (BRASS)
3. Calculating trades cost using cost definition lookup tables
4. Creating daily executive and performance reports
5. Web portal for interactive reporting



Quality Letters of Credit

Document Preparation Engine

1. Automated recognition, extraction, and upload of letters of credit, air way bills, ocean bills of lading and other input documents
2. Dynamic document creation engine. Complex document sets assembled and rendered on the fly from the templates library
3. Digital signing to instill trust in electronic documents while protecting data integrity.



Chas. P. Young Co.

Commercial printing.

Bill Processing System

Fully automated bills processing system equipped with online management and monitoring interfaces provides multi-step manipulation of thousands of PDF files containing bills. It extracts information from the bills into a database, which is then used to reassemble and group the bills in preparation for printing and sending to clients.

Microsoft Certified Partner

All SiMX software components are certified by Microsoft

Certification Aspects:

General Requirements
Installation and Removal
Stability and Performance
Use of Microsoft Core Resources
Security

Certified For:

Windows 7/Vista/XP/2000/NT
Windows Server 2003/2008 Standard/Enterprise/Datacenter
SQL Server 2000/2005/ 2008

Databases:

Oracle , SQL Server, Sybase, DB2, MySQL,
Access, Excel, FoxPro, dBase, and more

Technologies:

.NET, COM, COM+, OLEDB, SOAP, IIS, Active Script

Languages:

C++, C#, Java, Java Script, Visual Basic,
VB Script, XML, XSL, HTML